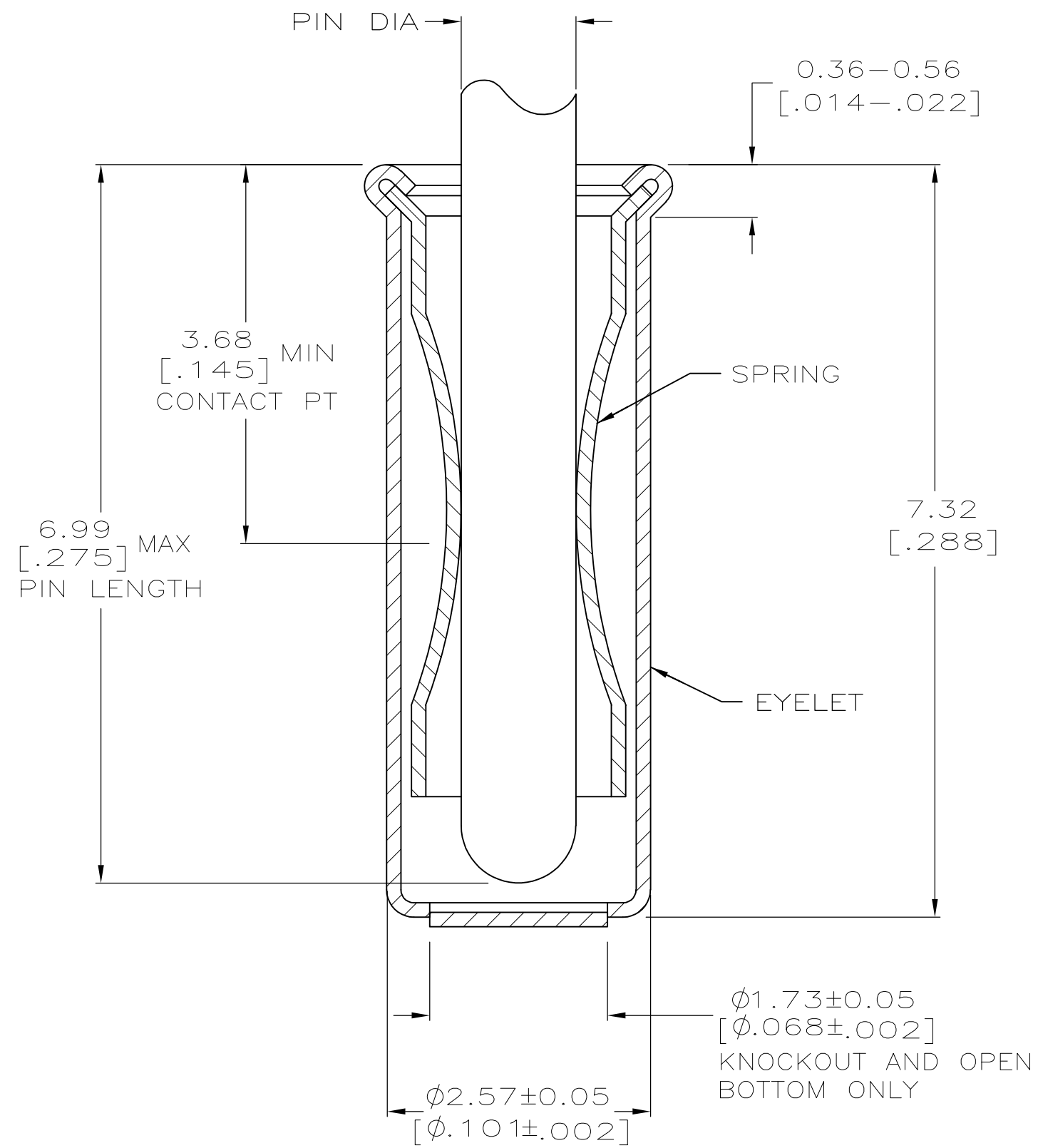
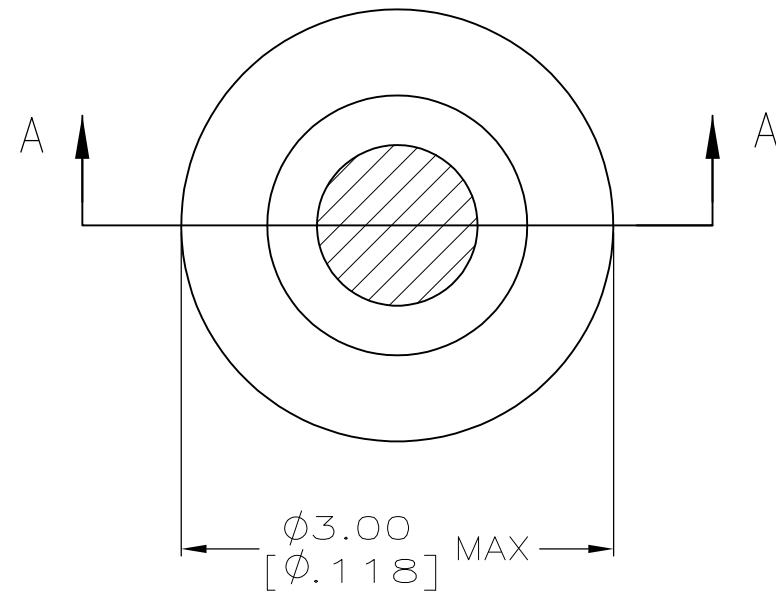


THIS DRAWING IS UNPUBLISHED. RELEASED FOR PUBLICATION  
 © COPYRIGHT - By - ALL RIGHTS RESERVED.

LOC	DIST	REVISIONS 11-11-94 RT		
GP	00	P	LTR	DESCRIPTION
		A2		REVISED PER ECO-11-004835
			DATE	OWN
			07MAR11	RK
			APVD	HMR



SECTION A-A

- ① TIN PLATE PER ASTM B 545 .0.00254 [.000100] MIN THICK.
- ② GOLD PER ASTM B 488, 0.00076 [.000030] MIN THICK OVER NICKEL PLATE PER QQ-N-290 0.00028 [.000011] MIN THICK ON CONTACT AREA.
- 3. RECOMMENDED HOLE SIZE, PLATED OR UNPLATED:  
 MACHINE INSERTION: 2.56±0.08 [.101±.003]  
 HAND INSERTION: 2.62<sup>+0.10</sup>/<sub>-0.00</sub> [.103<sup>+0.004</sup>/<sub>-.000</sub>]
- 4. APPLICATION TOOL PART NUMBER:  
 MACHINE NO. 682127-6  
 INSERTION HEAD NO. 682039-5
- ⑤ TO INSURE PROPER SPRING TENSION DO NOT EXCEED A 0.05 [.002] DIFFERENCE IN PIN DIA WHEN CHANGING TO A SMALLER PIN.
- 6. BOTTOM PLUG KNOCKOUT TOOL PART NUMBER 69729 WITH TIP PART NUMBER 69728-3.
- ⑦ MATERIAL: SPRING: BERYLLIUM COPPER PER ASTM B 194  
 EYELET: COPPER PER ASTM B 152
- ⑧ OBSOLETE PARTS: OBSOLETE CIS STREAMLINING PER D.RENAUD/D.SINISI

⑧ OBSOLETE	OPEN	1.42-1.65 [.056-.065]	TIN ①	TIN ①	2-5050871-4
	CLOSED KNOCKOUT			GOLD ②	2-5050871-3 2-5050871-1
	OPEN	1.27-1.45 [.050-.057]	TIN ①	TIN ①	1-5050871-9 1-5050871-0
	CLOSED	1.07-1.24 [.042-.049]	TIN ①	TIN ①	5050871-8
	OPEN			GOLD ②	5050871-6
	CLOSED			5050871-5	
	OPEN			GOLD ②	5050871-1
	BOTTOM TYPE	RECOMMENDED PIN DIA ⑤	EYELET	SPRING	PART NO
			FINISH		

THIS DRAWING IS A CONTROLLED DOCUMENT.		DWN	20APR2005	TE Connectivity	
		J. ALCORTA - DOCK5	20APR2005		
		CHK	20APR2005		
		J. HAVENER	20APR2005		
		APVD	20APR2005		
		J. HAVENER	20APR2005		
		PRODUCT SPEC		MINIATURE SPRING SOCKET ASSEMBLY SERIES 5	
		APPLICATION SPEC			
		WEIGHT		SIZE	A2
		FINISH	SEE TABLE	CAGE CODE	00779
				DRAWING NO	5050871
				RESTRICTED TO	-
				SCALE	20:1
				SHEET	1 of 1
				REV	A2